

**PROGRAMME HIGHLIGHT REPORT – March 2015**

**Aim**

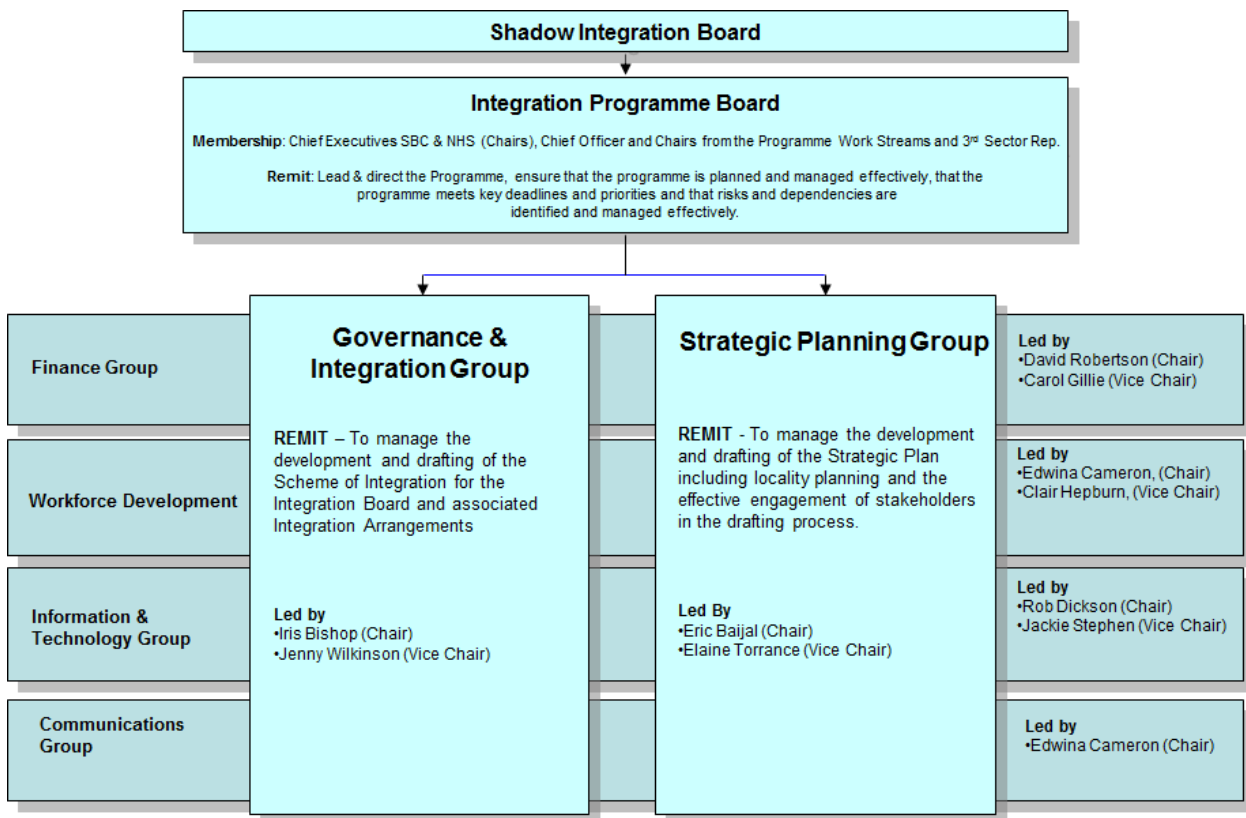
- 1.1 To provide an outline update on progress in the delivery of the Integration Programme.

**Background and Summary**

- 2.1 The Programme aims to deliver:

1. a Scheme of Integration (effectively the governance and operating arrangements for the partnership) by April 2015 in line with national, legislative timescales. Work is **ON TRACK** to achieve the target date.
2. a Strategic Planning Framework for the delivery and commissioning of services under the new integration arrangements. The Strategic Planning Framework needs to be in place by April 2016 at the latest. Our local target is to have this in place by October 2015 and we are currently **ON TRACK** to achieve this.

- 2.2 There are 6 work streams supporting the programme as shown below.



- 2.3 The two main Work Streams are:

- Governance & Integration Group – responsible for the delivering the Scheme of Integration
- Strategic Planning Group – responsible for delivering the Strategic Plan.

2.4 These 2 work streams are supported by 4 Work Streams

- The Finance Group
- The Workforce Development Group
- The Information, Performance and Technology Group
- The Communications and Engagement Group

2.5 Progress across each of these groups is summarised below.

**Headline Progress in the Reporting Period (December/January)**

3.1 Progress continues to be made across all work streams over the reporting period. In particular:

- **Scheme of Integration** –The formal consultation is still underway and lasts to the 13 March. Work has also continued on the development of the draft and an updated work-in-progress draft is included on the agenda for this meeting.
- **Public Engagement** – Events have been held in Kelso (5 attendees), Peebles (9 attendees) and Duns (12 attendees), at the time of writing and further events will take place in Hawick and Galashiels in the last week of February. These events have looked at both the Scheme of Integration and the Strategic Plan.
- **Strategic Plan** – A first working draft of the Strategic Plan is included on the agenda for this meeting. The first draft will be completed in mid-March for presentation to Council and the NHS Board on 2<sup>nd</sup> April. It will then be developed with Stakeholders through the Strategic Planning Group.
- **Strategic Planning Group** – Proposals for the recruitment of the standing Strategic Planning Group (required under legislation to support the Integration Joint Board in the development, review and renewal of the Strategic Plan) have been agreed by the NHS Board and SBC on 19<sup>th</sup> February. Work is underway to identify members of the Group which needs to be in place by the end of March so that it can contribute to the development of the second draft of the Strategic Commissioning Plan between 6<sup>th</sup> April and 5<sup>th</sup> June.

**Governance & Integration Group**

4.1 Work continues to review and update our draft Scheme of Integration using the guidance from the Scottish Government. The consultation, which runs from 22<sup>nd</sup> December until the 13<sup>th</sup> March, is underway and so far there have been 3 responses received. Comments will be reviewed and changes made, as appropriate, to the final draft.

4.2 Meetings are also being held with Scottish Government Reps to assist in this process and ensure that there are no surprises at, or after, the point of submission.

4.3 The most up-to-date working draft of the Scheme of Integration is available via the Board Secretary. Board members are reminded that the draft will be finalised and submitted at the end of March and ahead of their next meeting which is on the 27<sup>th</sup> April. The submission will also be ahead of the meetings of the Council and NHS Board on the 2<sup>nd</sup> April. NHS Borders has delegated authority to its Chairman and

Chief Executive, and Scottish Borders Council has delegated authority to its Chief Executive, to agree and submit the Scheme of Integration by the deadline of 31<sup>st</sup> March 2015.

### **Strategic Planning Group**

- 5.1 A first working draft of the Strategic plan is included on this agenda. The draft will continue to be developed with a view to presentation to the Council and NHS Board on the 2<sup>nd</sup> April. A second draft will then be developed with stakeholders over April and May before it goes out for wider consultation in July August and September.
- 5.2 Proposals for the recruitment of the statutory Strategic Planning Group have been agreed and nominations from the various stakeholder groups are being identified with a view to having the Group in place by the end of March. The Group will need to be in place by the beginning of April to enable their involvement in the development of the second draft of the Strategic Plan from 6<sup>th</sup> April through to the 5<sup>th</sup> June. Wider consultation on the 2<sup>nd</sup> draft will take place from 1<sup>st</sup> July through to the 22<sup>nd</sup> September.

### **The Finance Group**

- 6.1 The Financial planning process is nearing completion and work to support the Strategic Planning Work Stream has commenced.
- 6.2 A detailed timetable for the production of financial reports to the Shadow Board is now in place.
- 6.3 Work continues on the Role of the Chief Financial Officer and to define all leased or owned properties currently occupied – in whole or in part – by integrated health and social care services.

### **The Workforce Development Group**

- 7.1 The Group has successfully produced a work plan which will allow it to complete their contribution to the draft scheme of integration. The work will also provide a baseline workforce data within both organisations.

### **The Information, Performance and Technology Group**

- 8.1 Work is being undertaken to scope a programme to take forward the IT and data and information sharing issues identified in the initial investigative work. A successful bid has been made to the Technology Enabled Care fund to support the use of Video Conferencing technology.

## The Communications and Engagement Group

9.1 The main activity has been in supporting the launch of the Scheme of Integration including public engagements sessions in the 5 areas across the borders. An analysis of these events, and key lessons learned, will be undertaken and inform the next rounds of engagement in relation to the Strategic Plan – in early and late summer.

9.2 Consultation on the Scheme of Integration closes on the 13<sup>th</sup> March.

### Recommendation

The H&SC Integration Shadow Board is asked to **note** the report.

<b>Policy/Strategy Implications</b>	The programme will result in Joint Working policies and a 10 year Strategic Plan, with a 3 yearly review and renewal cycle, for the commissioning and delivery of integrated adult Health and Social Care services across the borders.
<b>Consultation</b>	The programme will involve extensive consultation over the development, delivery, review and renewal of integrated services as part of an associated Communications and Engagement plan.
<b>Risk Assessment</b>	A risk management approach is applied across the programme.
<b>Compliance with requirements on Equality and Diversity</b>	Integration arrangements will seek to identify and address equality and diversity issues and will be subject to the appropriate Impact Assessments.
<b>Resource/Staffing Implications</b>	None at this stage, however the Programme will address resource and staffing implications via its Workforce Development work stream and through its staff engagement arrangements.

### Approved by

Name	Designation	Name	Designation
Susan Manion	Chief Officer		

### Author(s)

Name	Designation	Name	Designation
James Lamb	Programme Manager		